

# 2017 Raleigh Architectural Survey Update

---

Tania Georgiou Tully

April 18, 2018

# Project Purpose

Update the architectural survey of Raleigh by recording properties within the city limits with a focus on:

- mid-20th-century neighborhoods and
- areas annexed since 2006 when the last update was completed.





# The Architectural Survey

**First, crucial step in recognizing, valuing, and preserving the heritage of the past.**

- provides a local base of information about community history and architecture
- provides the foundation for planning tools to protect and enhance the City's historic identity on a citywide scale
- regular updates reflect the passage of time and recognize new historic contexts



# Study List

Maintained by the NC Historic Preservation Office

Identifies properties and districts that are likely to be eligible for the National Register of Historic Places

Inclusion in the Study List is not an absolute guarantee of eligibility. Over time properties may require reevaluation due to changes or deterioration.

# Two Phase Project

## Historic Preservation Fund Grant

- Awarded September 2016
- Kick-off Public Meeting March 2017

## Phase I: Place properties on the State Study List

- Report reviewed by the State Historic Preservation Office December 2017
- Presented to National Register Advisory Committee February 2018

## Phase II: Intensive Survey of a Neighborhood(s)

- Select neighborhood(s) mid-May 2018
- Work completed about September 2018

# Phase I Results

---

Hanbury Preservation Consultants

# **RALEIGH SURVEY UPDATE 2017**



# **INDIVIDUAL PROPERTIES**

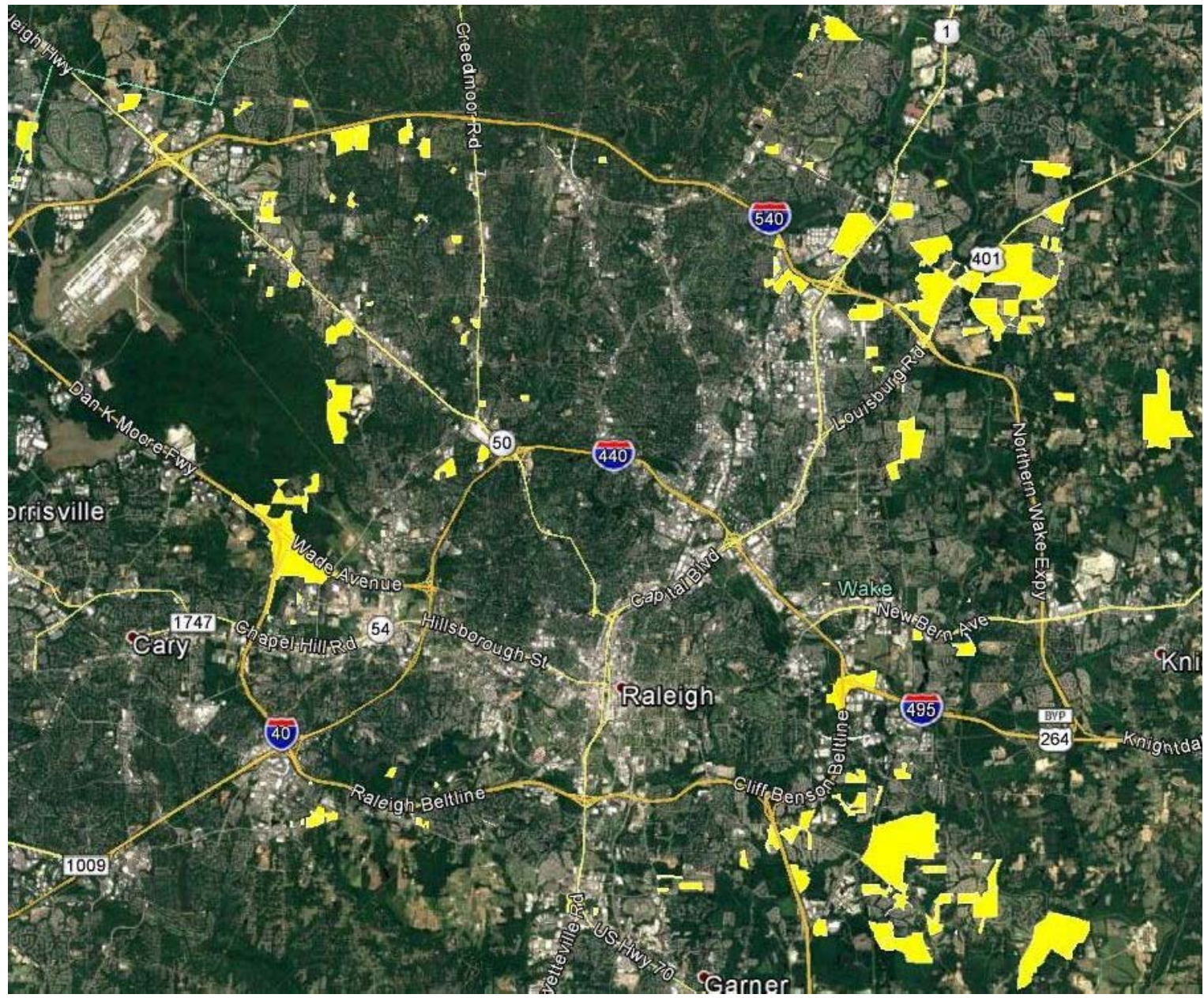


# INDIVIDUAL PROPERTIES

219 separate annexation areas

13 resurveys

10 new surveys



# INDIVIDUAL PROPERTIES

13 previously surveyed properties formerly in  
Wake County

5 were demolished

1 was inaccessible

6 lacked integrity or significance to merit  
further study







# INDIVIDUAL PROPERTIES RESURVEYS

Six Forks Baptist Church/  
Raleigh Korean Baptist  
Church

built in 1893, Gothic Revival  
surviving reminder of the  
rural past

Cemetery contains graves  
dating from the early  
1900s

Interior evaluation needed





# INDIVIDUAL PROPERTIES

10 new surveys within the annexation areas





# INDIVIDUAL PROPERTIES SURVEYS

House 6616 Pleasant Pines Dr., on 3 acres  
Built 1968, appears to be architect-designed  
Interior evaluation needed





# **NEIGHBORHOODS**

# NEIGHBORHOODS

Re-Survey 5 Neighborhoods placed on the North Carolina National Register Study List in 2006

- Caraleigh,
- Ridgewood,
- Fairway Acres,
- Lyon Park, and
- Forty Acres



# No Longer Eligible

Lyon Park and Forty Acres have had numerous teardowns and new construction to the extent they no longer have sufficient integrity to be considered National Register eligible



# Continued Eligibility

Fairway Acres, Caraleigh and Ridgewood continue to be potentially eligible, however the boundaries for Ridgewood and Caraleigh merit further study

# NEIGHBORHOODS

## **Re-Survey**

1. Brentwood,
2. Budleigh,
3. Longview Park,
4. Oxford Park,
5. Oakdale,
6. Parkland
7. Hertford Village,
8. Ralina,
9. Starmount,
10. Westover,
11. Woodcrest,
12. Gatewood,
13. Rollingwood, and
14. Windsor Park

## **Survey**

1. East Mordecai
2. Fuller Heights



# NEIGHBORHOODS

## **Not recommended for the Study List**

- Budleigh
- East Mordecai
- Fuller Heights
- Hertford Village
- Oakdale
- Oxford Park
- Parkland
- Ralina
- Rollingwood
- Westover

# NEIGHBORHOODS

## **Recommended for the Study List**

Brentwood

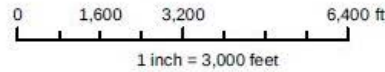
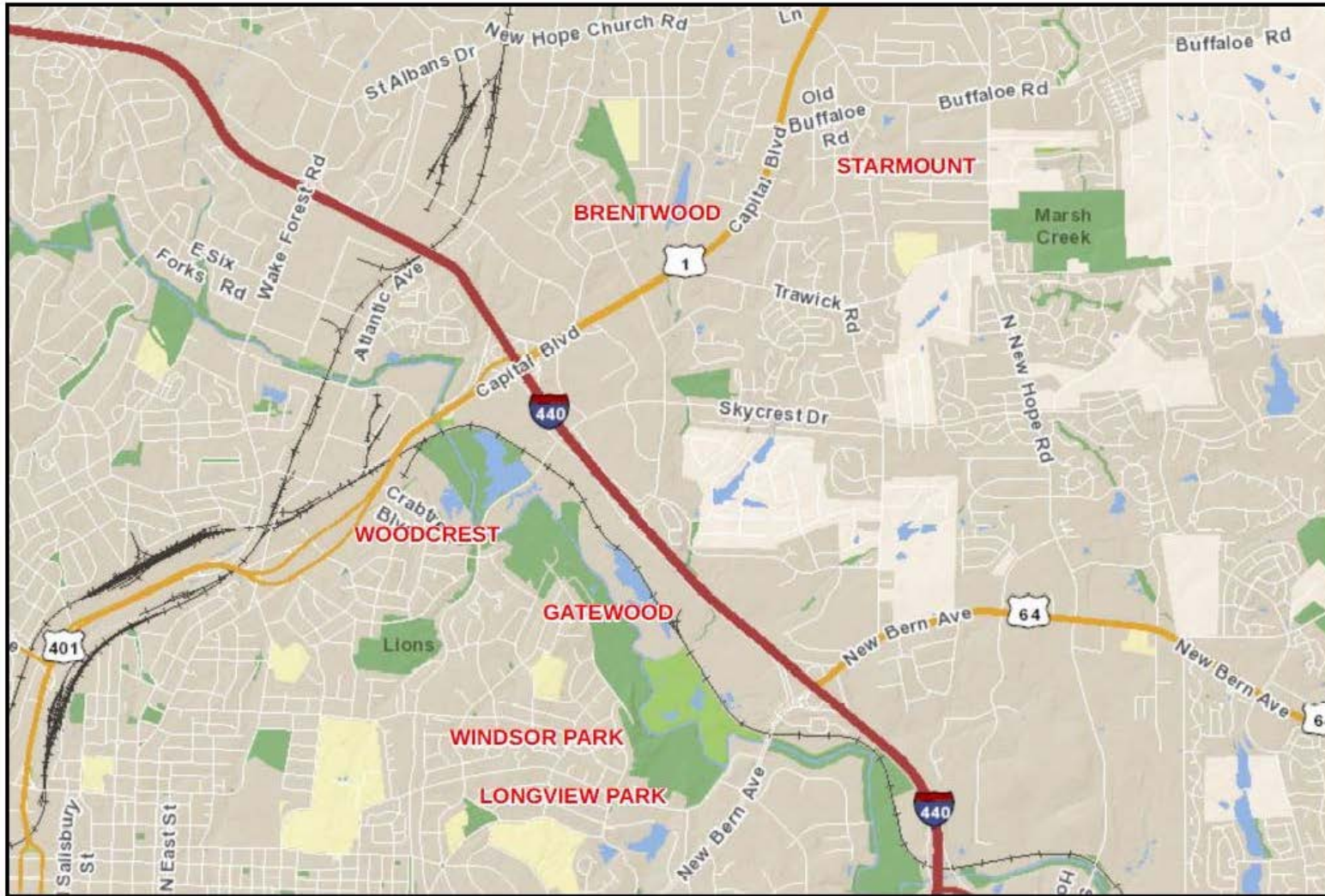
Gatewood

Longview Park

Starmount

Windsor Park

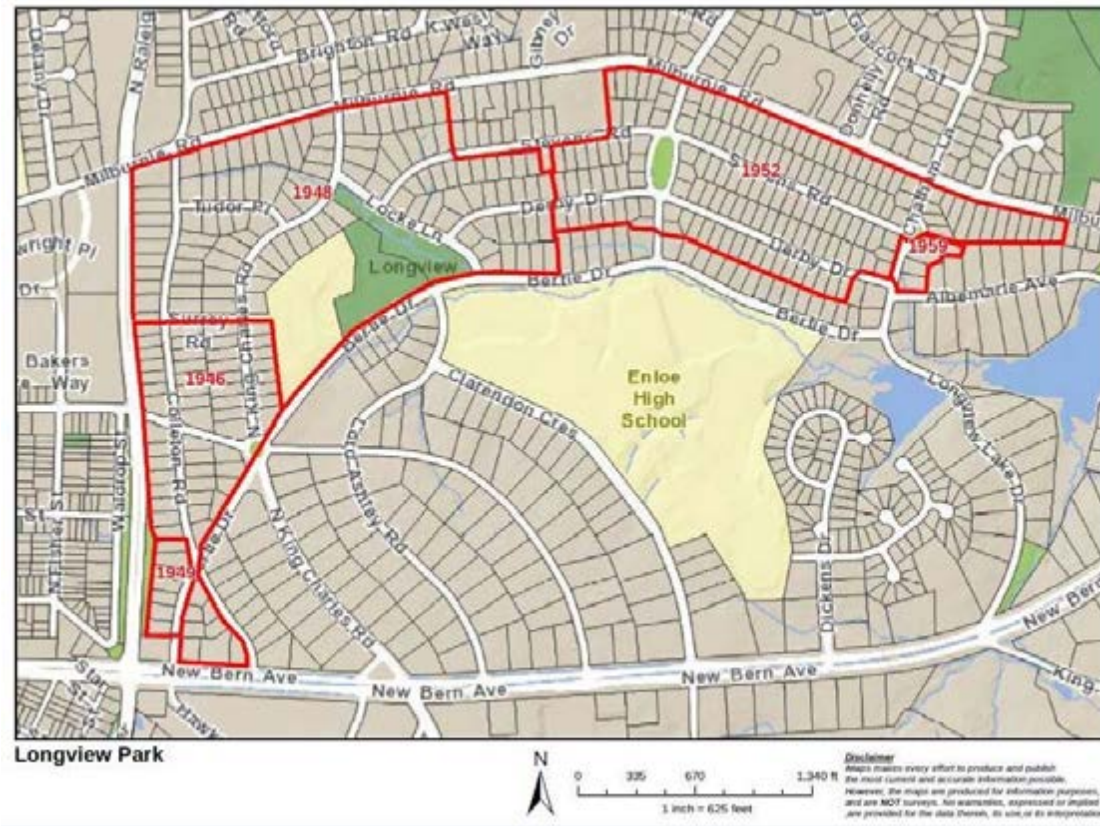
Woodcrest

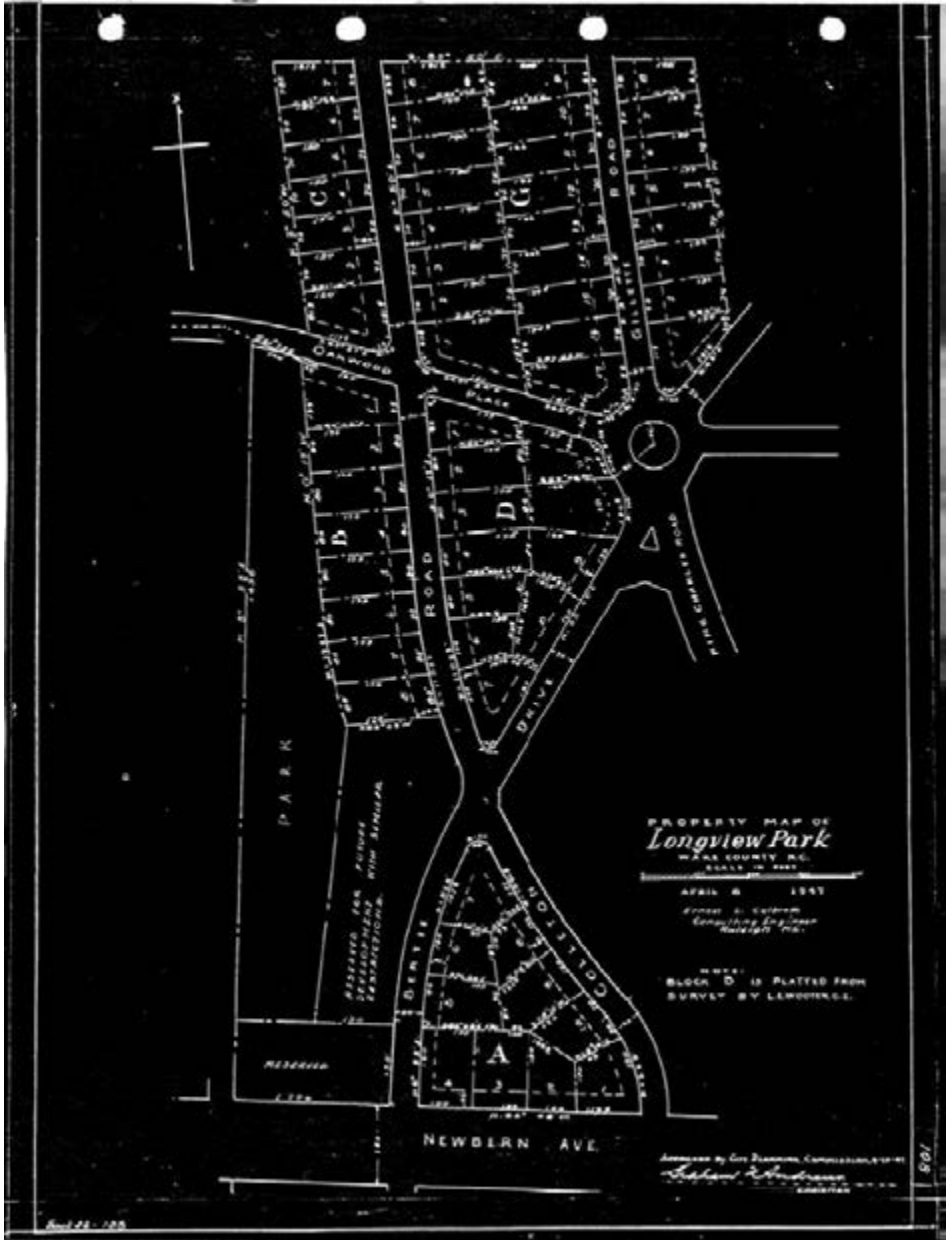


1 inch = 3,000 feet

**Disclaimer**  
 iMaps makes every effort to produce and publish the most current and accurate information possible. However, the maps are produced for information purposes, and are **NOT** surveys. No warranties, expressed or implied, are provided for the data therein, its use, or its interpretation.

# Longview Park





PROPERTY MAP OF  
*Longview Park*

WAKE COUNTY, N.C.  
SCALE 1" = 100'

APRIL 8, 1947  
Ernest S. Colburn  
Consulting Engineer  
Raleigh, N.C.

NOTE:  
BLOCK D IS PLATTED FROM  
SURVEY BY LEMMON & CO.

Approved by City Planning Commission, 4-17-47  
*Edmund W. Anderson*  
City Engineer













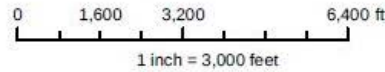
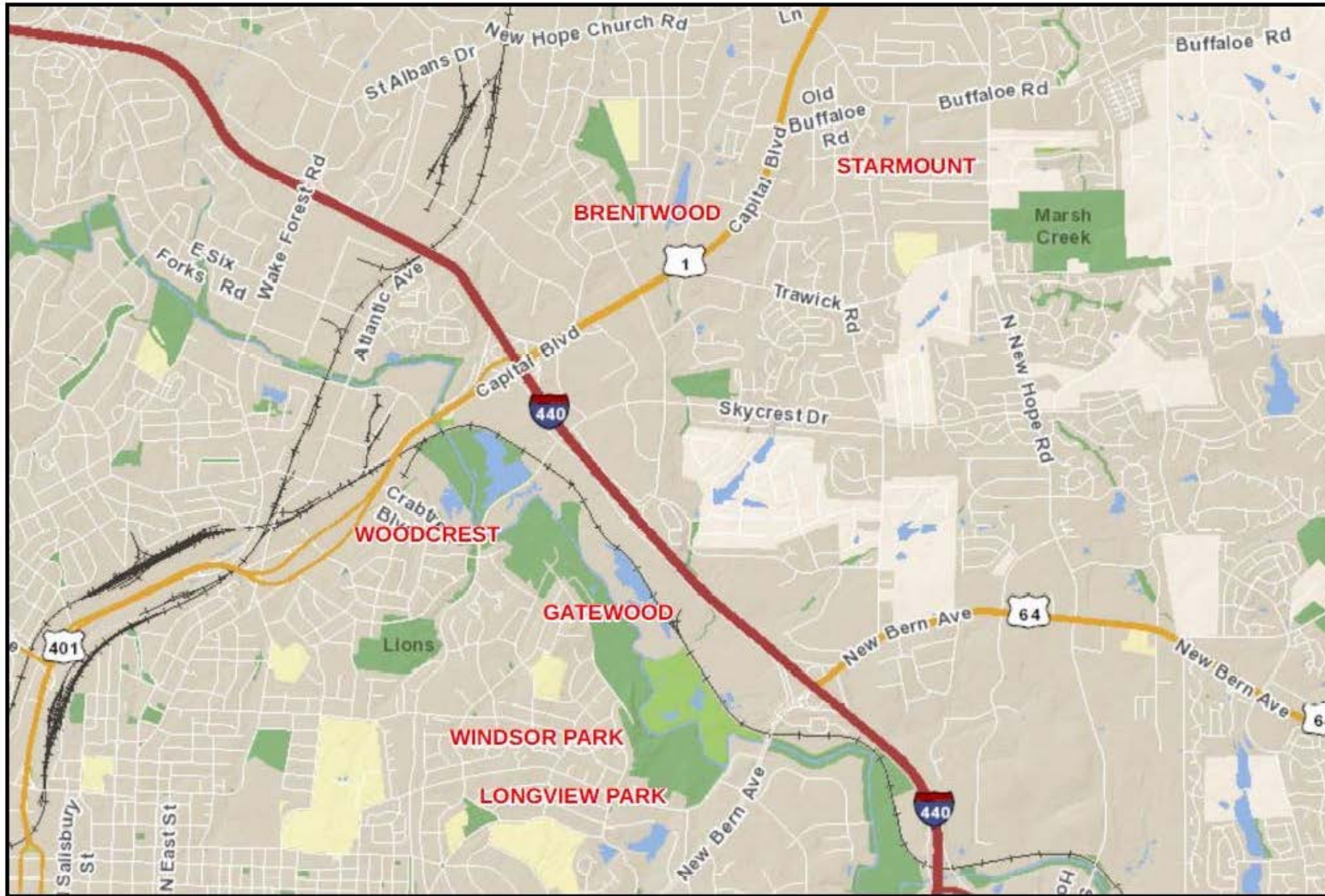












1 inch = 3,000 feet

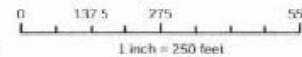
**Disclaimer**  
 iMaps makes every effort to produce and publish the most current and accurate information possible. However, the maps are produced for information purposes, and are **NOT** surveys. No warranties, expressed or implied, are provided for the data therein, its use, or its interpretation.

# Windsor Park





Windsor Park non contributing



**Disclaimer**  
 Maps makes every effort to produce and publish the most accurate and up-to-date information possible. However, the maps are produced for information purposes and are NOT surveys. No warranties, expressed or implied, are provided for the data therein, its use, or its interpretation.











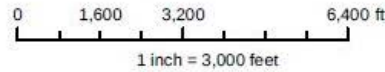
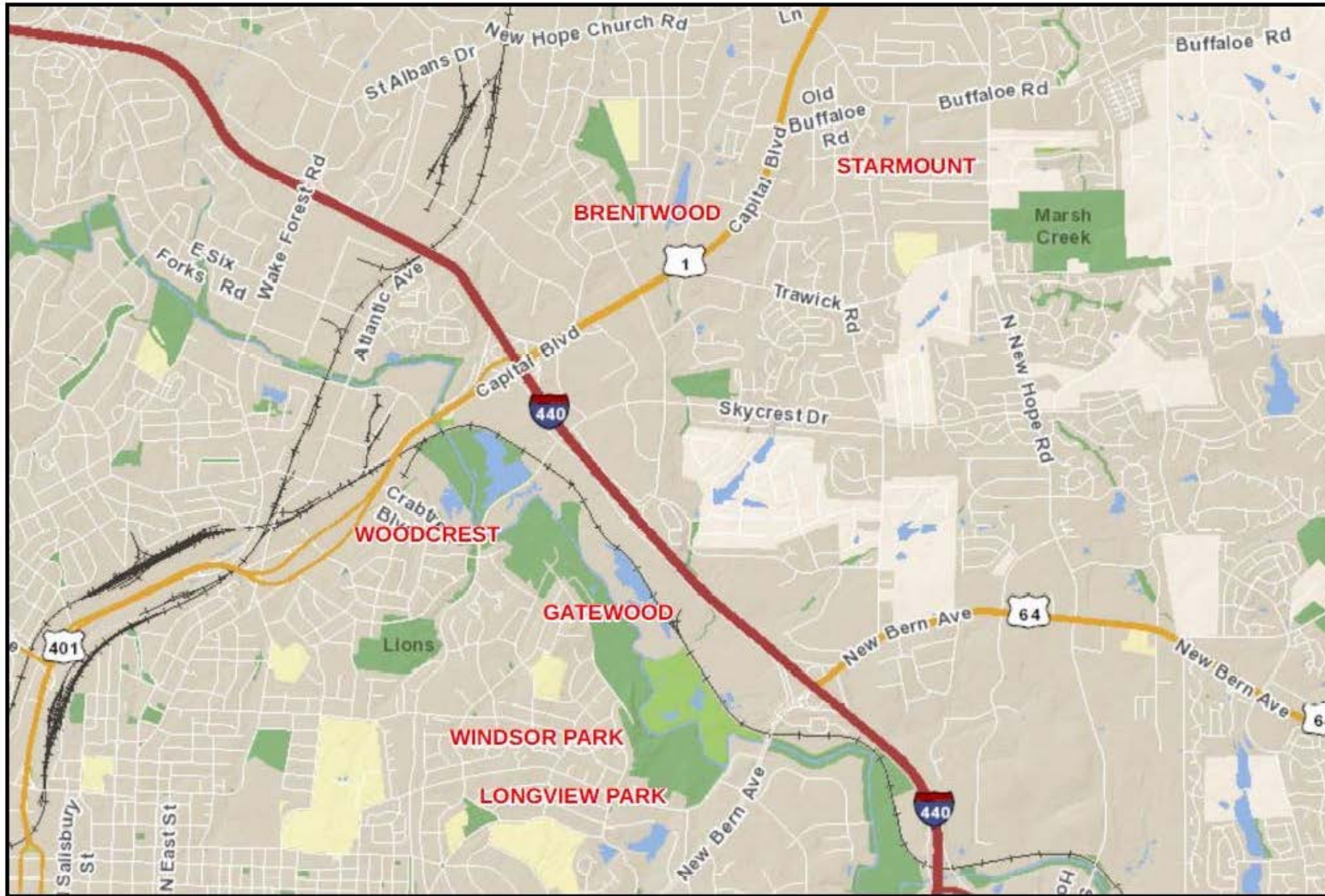












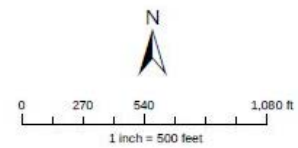
1 inch = 3,000 feet

**Disclaimer**  
 iMaps makes every effort to produce and publish the most current and accurate information possible. However, the maps are produced for information purposes, and are **NOT** surveys. No warranties, expressed or implied, are provided for the data therein, its use, or its interpretation.

# Woodcrest



Woodcrest per plats 1955-1959

















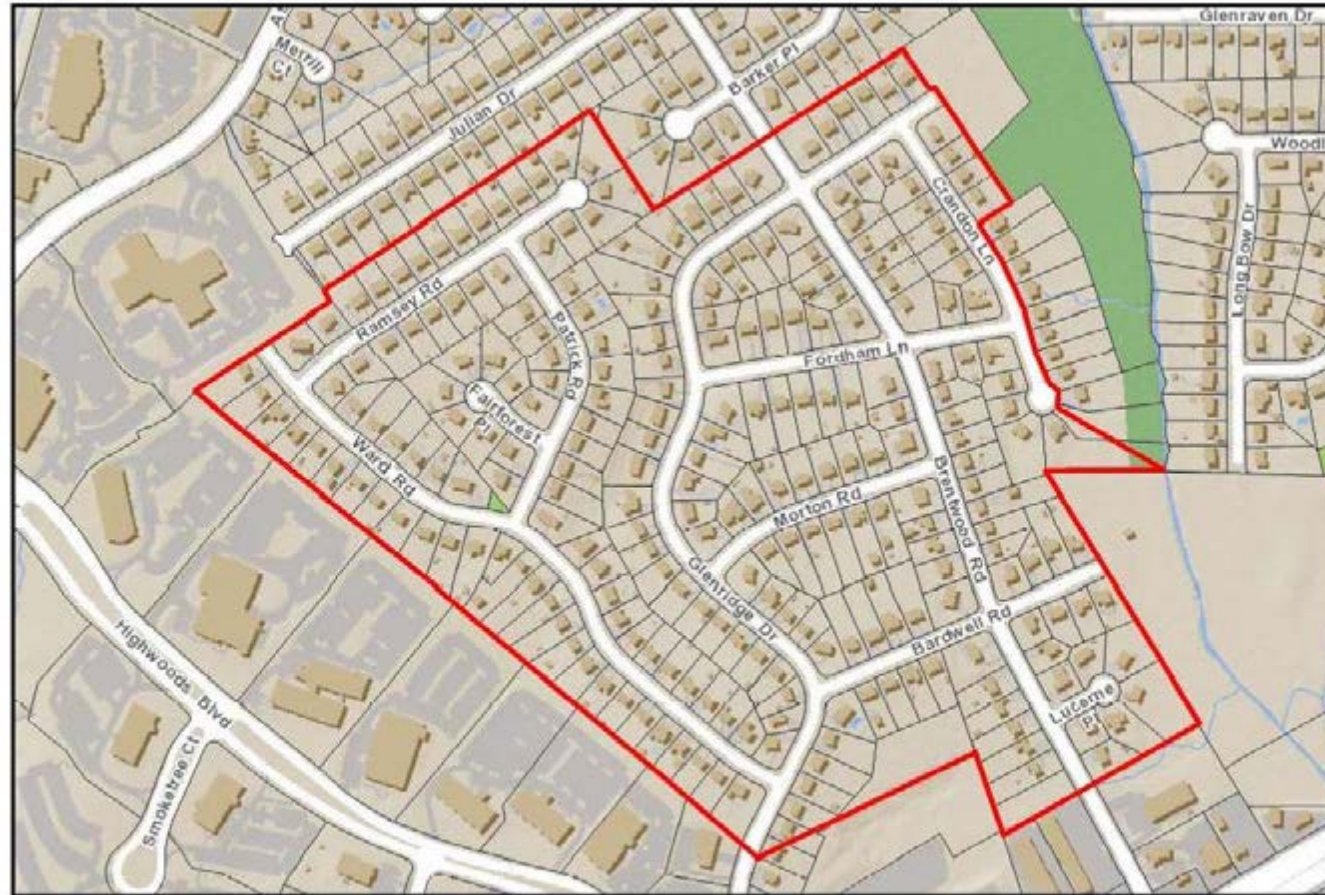








# Brentwood



Brentwood roughly per plat through 1962



**Disclaimer**  
Mapco makes every effort to produce and publish the most current and accurate information possible. However, the maps are produced for information purposes, and are **NOT** surveys. No warranties, expressed or implied, are provided for the data therein, its use, or its interpretation.

















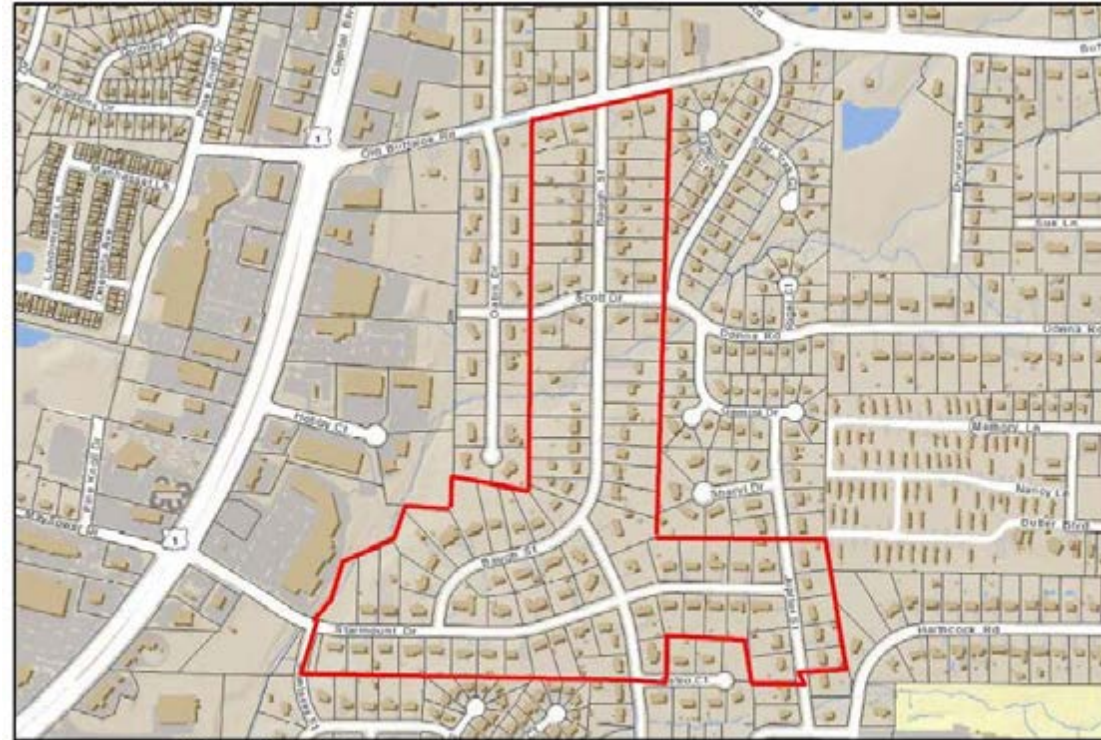








# Starmount



Starmount, roughly per plats 1959



0 270 540 1,080 ft  
1 inch = 500 feet

**Disclaimer**  
MapInfo makes every effort to produce and publish the most current and accurate information possible. However, the maps are produced for information purposes, and are **NOT** surveys. No warranties, expressed or implied are provided for the data therein, its use or its interpretation.











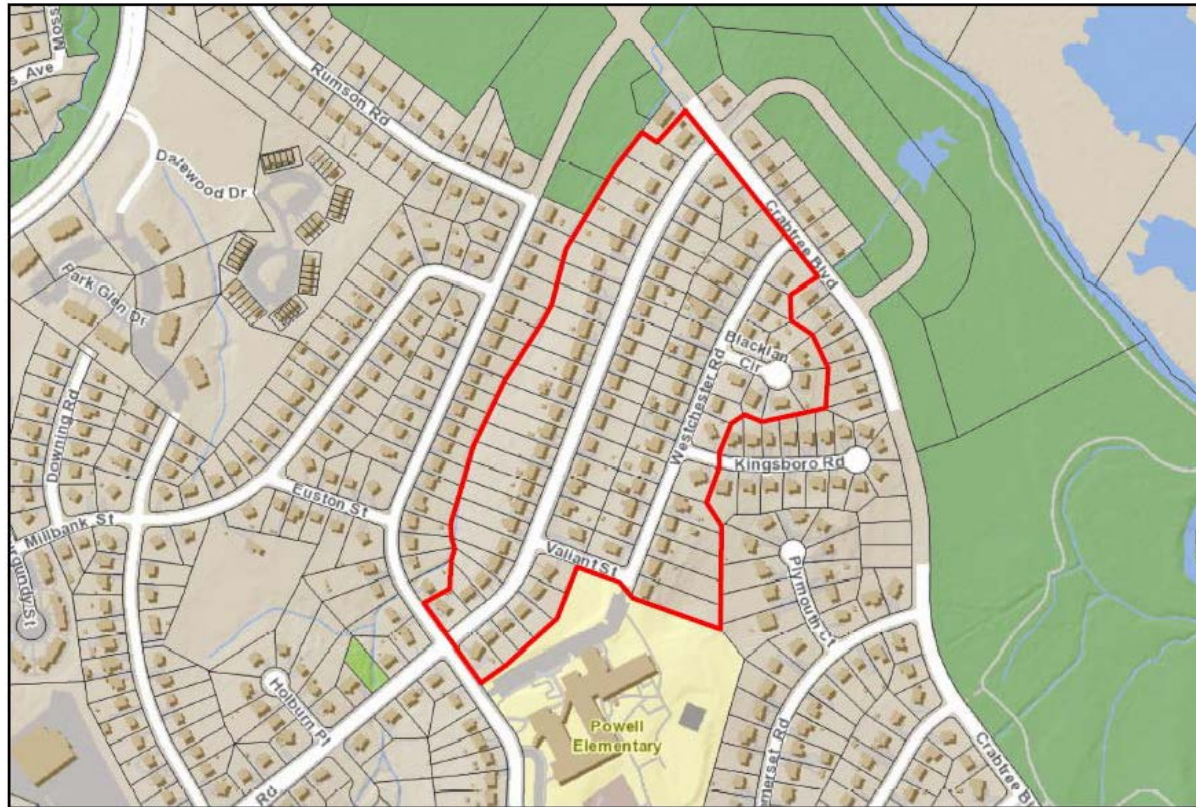




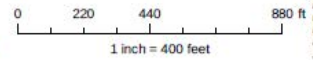




# Gatewood



Gatewood per plat



**Disclaimer**  
Maps makes every effort to produce and publish the most current and accurate information possible. However, the maps are produced for information purposes, and are **NOT** surveys. No warranties, expressed or implied, are provided for the data therein, its use, or its interpretation.



















# SUMMARY

# INDIVIDUAL PROPERTIES

Two merit additional study



Raleigh Korean Baptist Church



House at 6616 Pleasant Pines Drive



# PREVIOUSLY STUDY LISTED NEIGHBORHOODS

## **Eligible**

Ridgewood

Caraleigh

Fairway Acres

## **No Longer Eligible**

Lyon Park

Forty Acres

# OTHER NEIGHBORHOODS

## **Add to Study List**

Brentwood

Gatewood

Longview Park

Starmount

Windsor Park

Woodcrest

## **Do Not Add to Study List**

Budleigh

East Mordecai

Fuller Heights

Hertford Village

Oakdale

Oxford Park

Parkland

Ralina

Rollingwood

Westover



# Phase II

---

Tania Georgiou Tully

## Next Steps

Select Neighborhood

Neighborhood Study

Create Inventory List

Final Report