

























































THIS PLAN MAY NOT BE REPRODUCED IN FULL OR IN PART WITHOUT WRITTEN PERMISSION. SUCH AS FOR THE PURPOSES OF REPRODUCTION OR FOR THE PURPOSES OF A COLLECTION. CREATION OF A COPY OF THIS PLAN UNDER ANY CIRCUMSTANCES IS PROHIBITED.

7

E. EDENTON

532 536 540

BOUNDARY THIS BOUNDARY MAY BE PROTECTED BY CONCRETE AND

Stetings Ln

N. EAST

NEWBERN AV.

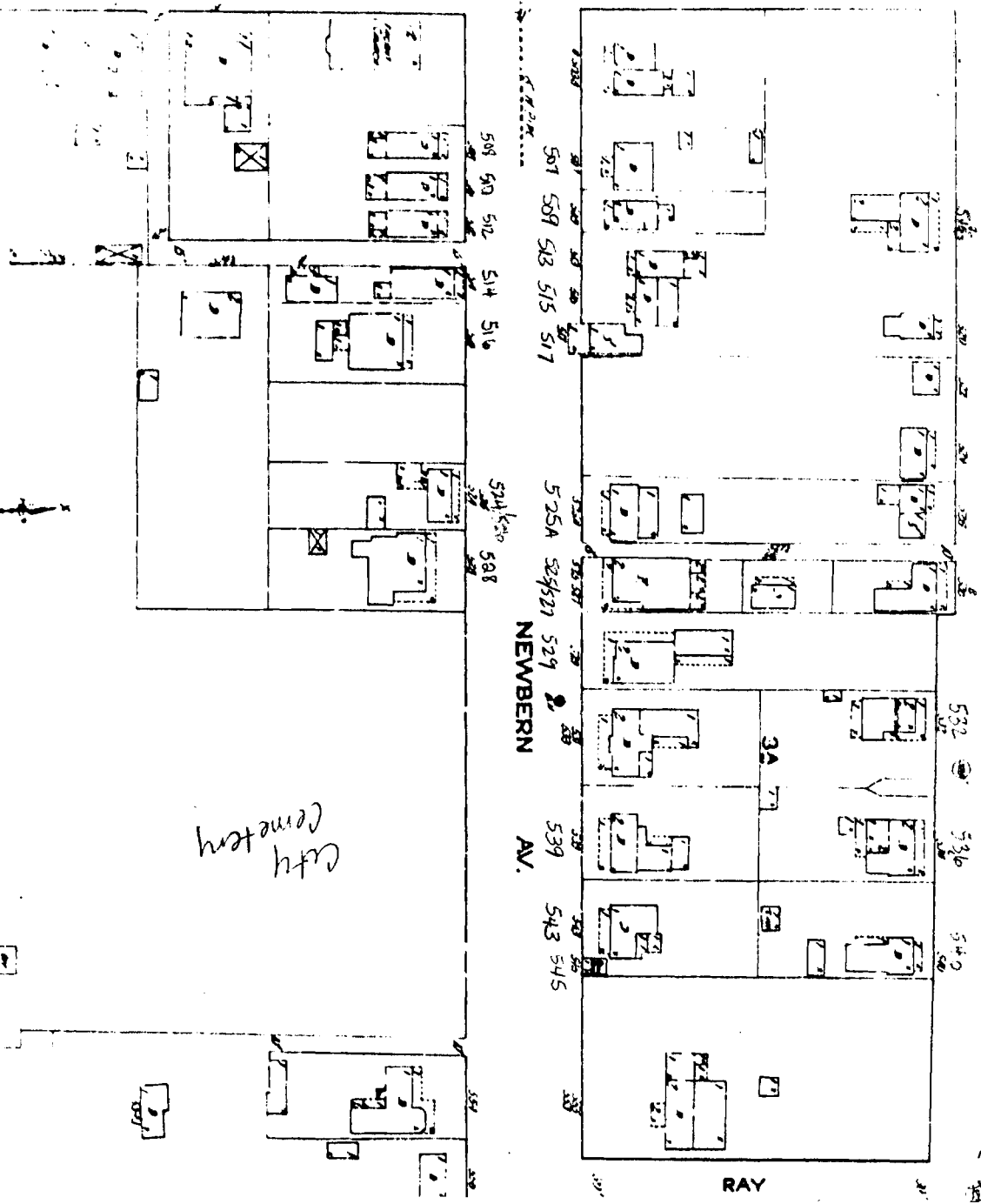
501 508 513 515 517

525A 524521 529

539 543 545

509 510 512 514 516

524 525 528 529 530 531 532 533 534 535 536 537 538 539 540 541 542 543 544 545 546 547 548 549 550 551 552 553 554 555 556 557 558 559 560 561 562 563 564 565 566 567 568 569 570 571 572 573 574 575 576 577 578 579 580 581 582 583 584 585 586 587 588 589 590 591 592 593 594 595 596 597 598 599 600



City Cemetery

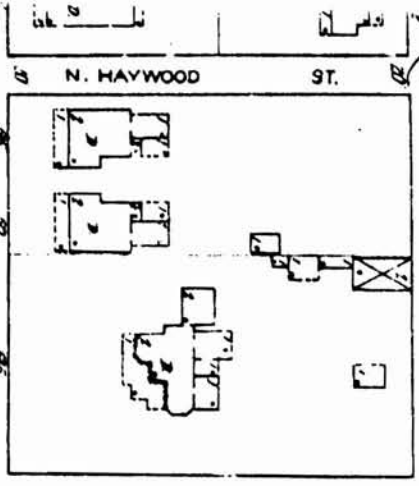


93

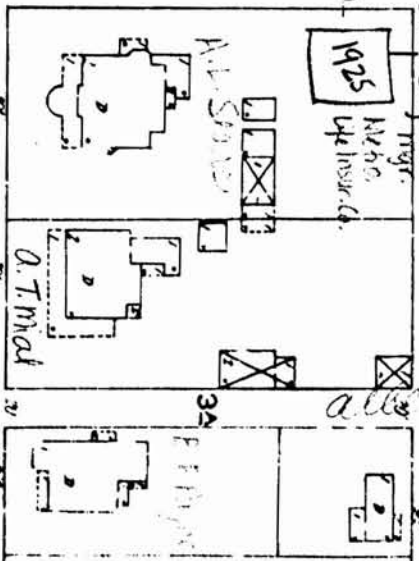
16

8  
9  
18

E. EDENTON



SEAWELL AV.



18

NEWBERN

AV.

*I.M. Innd*



[ ]

Lot No. 1	\$300
2	300
3	200
4	200
5	200
6	200
7	200
8	200
9	200
10	200
11	200
12	250

SECTION 2.

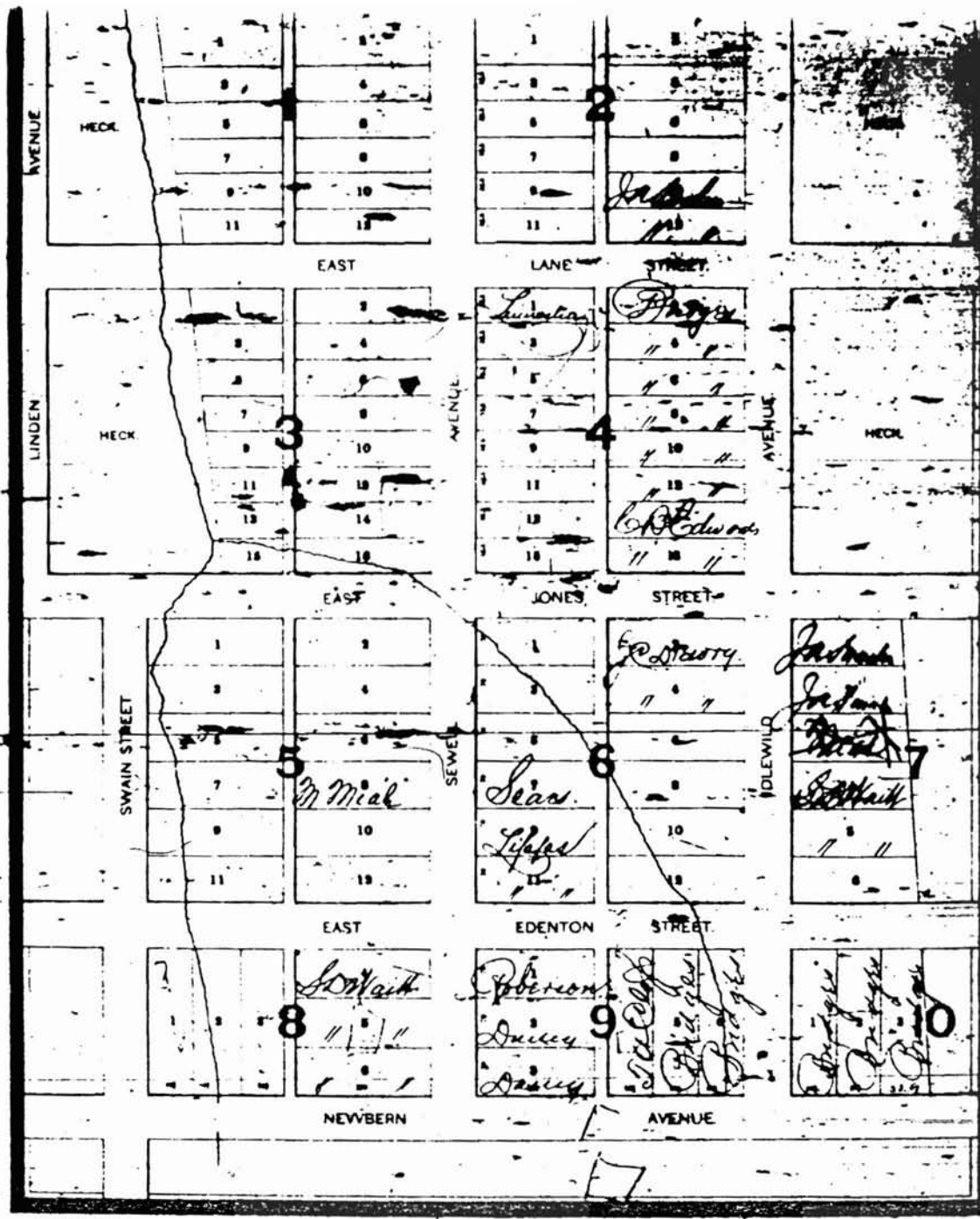
Lot No. 1	\$350
2	350
3	250
4	250
5	250
6	250
7	250
8	250
9	250
10	250
11	300
12	300

SECTION 3.

Lot No. 1	\$200
2	300
3	150
4	250
5	150
6	250
7	125
8	250
9	125
10	250
11	125
12	250
13	100
14	250
15	100
16	300

SECTION 4.

Lot No. 1	\$300
2	300
3	250
4	250
5	250
6	250
7	250
8	250
9	250
10	250
11	250
12	250
13	250
14	250
15	300
16	300



MAP OF "THE SEWELL GROVE" ADDITION TO THE CITY OF RALEIGH, N. C.  
 THE PROPERTY OF THE RALEIGH LAND AND IMPROVEMENT CO.

Figure 4.  
 1891 Map of the "Sewell  
 Grove" Addition to the  
 City of Raleigh